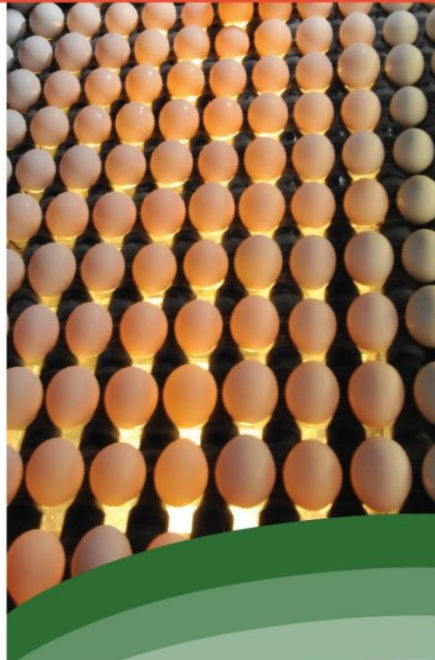




United States Department of Agriculture

Agricultural Marketing Service

Creating Opportunities for American Farmers and Businesses





Agricultural Marketing Service

Creating Opportunities for American Farmers and Businesses

Handler Training Module 3: Basics of Reporting

Educational materials
prepared by USDA AMS Staff

Module 3: Basics of Reporting

Content:

- Receipts and Utilization
- Fortification
- True Protein
- Route Disposition
- Other Uses
- Producer Daily Weights & Payroll
- Reporting Logistics

Module 3: Basics of Reporting

Receipts and Utilization

Milk Classification

California (CA) vs. Federal Order (FO) Class

CA 1 = FO I

CA 2 & CA 3 = FO II

CA 4a = FO IV

CA 4b = FO III

Milk Classification

4 Classes of Milk

- Class I – Bottle, Beverage Fluid Milk Products, including Eggnog
- Class II – High Fat, Cultured, and Soft Products, Heavy Cream, Cottage Cheese, Yogurt, Ice Cream
- Class III – Hard Cheese, Cream Cheese, Cheese (other than Cottage Cheese)
- Class IV – Butter, Powder, Dry Milk Products, Non Fat Dry Milk (NFDM)

For more information see §1051.40.

Product Classification

Class I

- Bottled Milk
- Cultured Buttermilk
- Eggnog



Class II

- Ice Cream
- Cottage Cheese
- Yogurt
- Pkg. Cream
- Hermetically-Sealed Containers



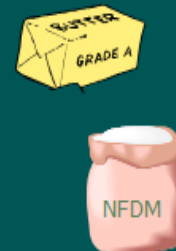
Class III

- Cheese
- Cream Cheese



Class IV

- Butter
- NFDM

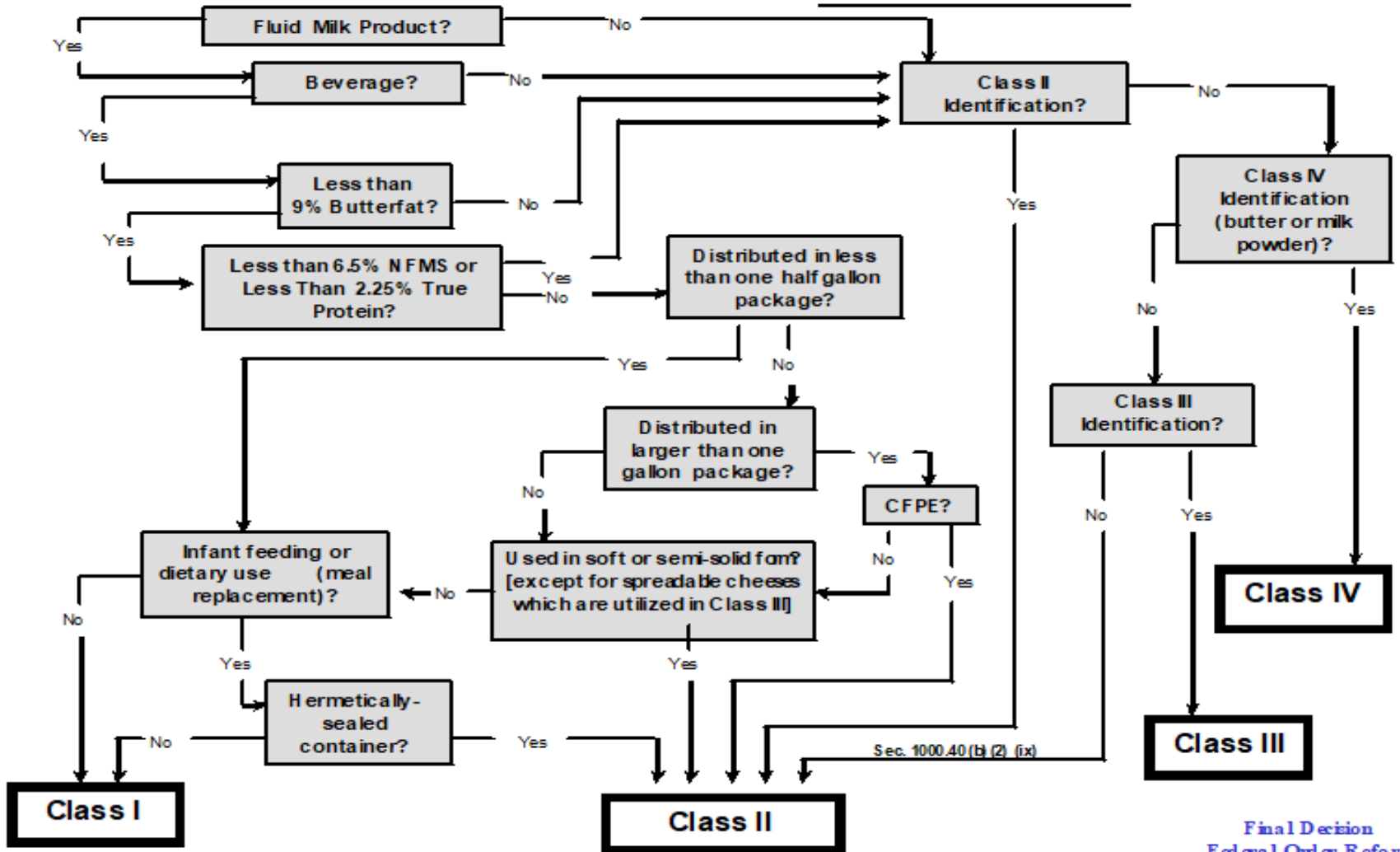


Agricultural Marketing Service



Start here

Template for Product Classification



Receipts and Utilization (R&U)

Receipts

- Beginning Inventory
- Bulk Fluid Milk Product (FMP)
- Bulk Fluid Cream Product (FCP)
- Packaged FMP
- Concentrated Milk Products (fluid equivalent)
Ex. Condensed and Nonfat Dry Milk (NFDM)

For more information see §1051.30 (a).

Receipts and Utilization (R&U)

Utilization – The end use of all receipts

- 4 Classes of Milk
 - I – Bottle, Beverage FMP
 - Fluid Products
 - II – High Fat, Cultured, and Soft Products
 - Heavy Cream, Cottage Cheese, Yogurt, Ice Cream
 - III – Hard Cheese, Cream Cheese
 - Cheese, other than Cottage Cheese
 - IV – Butter, Powder
 - Dry Milk Products, Nonfat Dry Milk (NFDM)

For more information see §1051.30(c).

Receipts and Utilization (R&U)

Shrinkage

- Receipts > Utilization
- 2% allowed on Farms Weights
- 1.5% allowed on Plant Weights
 - Priced at lowest price class
 - Typically Class III or IV
 - Shrinkage in excess of the 2% allowed is assigned to the existing utilization in series starting with Class I
 - (i.e. I, II, III, IV)

Overage

Receipts < Utilization

Gross Utilization

Identified Utilization + Shrinkage

Receipts - Pool Plant

Each Handler that operates a Pool Plant shall report the following:

- Producer Milk (including diversions)
- Receipts from Pool Plants and 9(c) Handlers (Coops)
 - Each of the above will include:
 - Product pounds
 - Butterfat pounds
 - Protein pounds
 - Other Solids pounds – (solids-non-fat other than protein)

For more information see §1051.30.

Receipts – Pool Plant

Each Handler shall also report:

- Receipts of packaged fluid milk products and bulk fluid cream products from other Pool Plants
- Receipts of other source milk
- Beginning Inventory of fluid milk products and bulk fluid cream products
 - Each of the above will include:
 - Product pounds
 - Butterfat pounds

For more information see §1051.30.

Receipts

1 *Plant :* Sample Plant
 2 *Pool Date :* November 2018
 3 *Order :* 051
 4 *YIELD :* 201811

Receipts

						Totals	0	0	0	0		
Report Category	From Handler Name	From Order No.	Product Type	Product Code	Product Class	Product Pounds	Butterfat Pounds	Protein Pounds	Other Solid Pounds	Broker Name	Notes	
7	Transfer Bulk	Sample Plant 2, City, ST	SI									
8												
9												
10												
11												
12												
13												
14												
15												
16												
17												
18												

- Bulk Composite
- Bulk Order
- Bulk PHS
- Label Recommendations FHP
- Hand-hold - Class 1
- Hand-hold - Class 2
- Hand-hold - Class 4
- Hand-hold Unconcentrated Powder

Utilization – Pool Plants

Each Handler shall report:

- The utilization or disposition of all milk and milk products that are required to be recorded as Receipts
- Such other information with respect to the receipts and utilization of skim milk, butterfat, milk protein, and other nonfat solids
- Ending Inventory
 - Each of the above will include both product pounds and butterfat pounds

For more information see §1051.30.

New Products

When a new product is introduced into a market, the Market Administrator of the market of origin will collect the information on the product:

- formulas
 - production records
 - laboratory test results
 - packaging records
 - any other data available
- ❖ The information will then be forwarded to the other MA's for review and classification.

Module 3: Basics of Reporting

Fortification

Fortification

Two considerations for Condensed and NFDM used to fortify Class I fluid milk products under Federal Orders:

- a) The volume effect (the displacement or volume increase resulting from the addition of a product to a quantity of milk).
- b) The fortification effect (the resulting increase in nonfat solids test of adding solids to milk).

These effects represent the two parts of the skim equivalent factor which is used to define the FO treatment of fortification of fluid milk products.

Fortification

- Different factors are used for condensed and NFDM. Each factor defines the skim equivalent of the respective product.
- Condensed testing 33.5% has a volume factor of 0.904 and a fortification factor of 2.709 ($0.904 + 2.709 = 3.613$ skim equivalent).
- NFDM has similar factors. For nonfat dry milk, the volume factor is 0.65 and the fortification factor is 9.89 ($0.65 + 9.89 = 10.54$ skim equivalent).
- These factors are used to apportion the dairy product used for fortification between Class I and Class IV.

Fortification

- Since receipts are described using the total skim equivalent factor and the utilization is described using the fortification factor, by difference, the volume effect is attributed to Class I utilization, i.e., it is implicit in the volume of Class I fluid milk products.
- In turn, when the volume of fluid milk products is converted to pounds using volume to weight factors, the volume effect is converted to pounds.

Fortification

Example:

- 1,000 pounds of condensed used to fortify Class I products would be reported as 3,613 pounds of Other Source receipts, 2,709 pounds of Class IV utilization and the corresponding 904 pound difference showing up as increased Class I sales.

Fortification

§1000.14 Other source milk.

- (b) Products (other than fluid milk products, fluid cream products, and products produced at the plant during the same month) from any source which are reprocessed, converted into, or combined with another product in the plant during the month;

For more information see §1000.14 Other Source Milk.
and §1000.40 Classes of Utilization.

Fortification

§1000.40 Classes of Utilization.

- (d) Class IV milk shall be all skim milk and butterfat:
- (3) In the skim milk equivalent of nonfat milk solids used to modify a fluid milk product that has not been accounted for in Class I.

For more information see §1000.14 Other Source Milk.
and §1000.40 Classes of Utilization.

Fortification

RECONCILIATION OF MILK-DERIVED PRODUCTS

MILK-DERIVED PRODUCT: **NFDM**

Version 6.00 Dated 01/01/11

Handler:	Month/ Year:	Completed by:
		Date:

Computation of Nonfluid Loss or (Gain)	Pounds	Non-Standard Factors*	Standard Factors
Beginning Inventory		<i>Butterfat Percent **</i>	#NAME?
Manufactured		<i>Fluid Equivalent Factor</i>	#NAME?
Purchased		<i>Class IV Fluid Equiv. Factor</i>	#NAME?
Sold		*Standard Factors will be applied unless a Non-Standard Factor is entered in the blue shaded area. ** Butterfat percent is calculated per Pound of Powder.	
Dumped/Destroyed			
Ending Inventory			
Total to Account For	-		
Class I Fortification & Reconstitution	-		
Used to Produce - Class II	-		
Used to Produce - Class III	-		
Used to Produce - Class IV	-		
Total Accounted For	-		
Loss (Gain)	-		

Computation of Receipts of Nonfluid Milk	Pounds	Audited Class II NFDM Receipts					
Used in Class II - (Limited to Total to Account For from above)	-	PP	BF	Page	Sec	Item	Seq. #
Fluid Equivalent Factor	#NAME?	#NAME?	#NAME?	1	08	####	
Used in Class I	-						
Used in Class III	-						
Used in Class IV	-						
Loss or (Gain)	-						
Total Powder (Cannot be less than 0)	-						
Fluid Equivalent Factor	#NAME?						

Computation of Nonfluid Utilization	Pounds	Audited Class IV NFDM Receipts					
Nonfluid Used to Fortify Class I		PP	BF	Page	Sec	Item	Seq. #
Whole Milk		#NAME?	#NAME?	1	10	####	
2% Milk							
1% Milk							
Skim Milk							
Buttermilk							
Eggnog							
Flavored Milk & Drinks							
Total Pounds Used to Fortify Class I	-						
Class IV Fluid Equivalent Factor	#NAME?						

Computation of Nonfluid Utilization	Pounds	Audited NFDM Used to Fortify Class I					
Nonfluid Used to Produce Class II:		PP	BF	Page	Sec	Item	Seq. #
Packaged Half-n-Half		#NAME?	#NAME?	5	12	####	
Packaged Heavy Cream over 27%							
Sour Cream							
Yogurt							
Drinkable Yogurt & Keifer							
Dips							
Cottage Cheese, etc.							
Ice Cream, etc.							
Total Pounds Used to Produce Class II	-						
Fluid Equivalent Factor	#NAME?						

Computation of Nonfluid Utilization	Pounds	Audited NFDM Used to Produce Class II					
Nonfluid Used to Produce Class II:		PP	BF	Page	Sec	Item	Seq. #
Packaged Half-n-Half		#NAME?	#NAME?	3	09	310	
Packaged Heavy Cream over 27%		#NAME?	#NAME?	3	09	322	
Sour Cream		#NAME?	#NAME?	3	09	330	
Yogurt		#NAME?	#NAME?	3	09	340	
Drinkable Yogurt & Keifer		#NAME?	#NAME?	3	09	912	
Dips		#NAME?	#NAME?	3	09	360	
Cottage Cheese, etc.		#NAME?	#NAME?	3	11	380	
Ice Cream, etc.		#NAME?	#NAME?	3	12	711	
Total Pounds Used to Produce Class II	-	#NAME?	#NAME?	3			
Fluid Equivalent Factor	#NAME?	#NAME?	#NAME?	3			
		#NAME?	#NAME?	3			
		#NAME?	#NAME?	3			
Total Pounds Used to Produce Class II	-	#NAME?	#NAME?	3			
Fluid Equivalent Factor	#NAME?	#NAME?	#NAME?	3			

Module 3: Basics of Reporting

Protein

Protein

California State Order:

- (true protein) + (non-protein nitrogen) = total protein
- Included in solids-not-fat

FMMO:

- Protein = true protein
 - true protein in milk is the total protein minus the non-protein nitrogen (NPN)
- Protein is broken out from solids-not-fat
 - solids-not-fat – true protein = other solids

Protein

- A portion of the nitrogen in milk comes from non-protein sources, such as urea and uric acid. These other protein sources are called non-protein nitrogen (NPN)
 - The textbook average level of NPN in milk is about 6%
- Milk protein contains 15.65% nitrogen. To convert the Kjeldahl nitrogen reading to milk protein, the nitrogen measurement is multiplied by a factor of 6.38 ($100 \div 15.65$)
 - For example, if a milk sample is determined to contain .55% nitrogen by Kjeldahl analysis, then its protein content is $.55 \times 6.38$, or 3.5%
- The true protein in milk is the total nitrogen minus the NPN, then multiplied by 6.38

Protein Calculation

$$(\text{Total Protein}) - (\text{NPN}) = \text{True Protein}$$

Example:

Assuming an average NPN value of 6%, then the true protein content of a milk testing 3.2% total protein would be calculated as follows:

$$6\% \times 3.2\% = 19\% \text{ NPN}$$

3.20% Total Protein

–.19% NPN

3.01% True Protein

Module 3: Basics of Reporting

Route Disposition

Route Disposition – Total

Any fluid milk product in consumer-type packages or dispenser units classified as Class I milk that is delivered to a retail or wholesale outlet.

- Includes route sales in and out of the marketing area
- Does not include deliveries to a plant
- Includes disposition from a plant store, vendor, or vending machine

Route Disposition - Out of Area

Is a break-out of any fluid milk product in consumer-type packages or dispenser units classified as Class I milk that is delivered to a retail or wholesale outlet **outside of the marketing area**

- Is a total of route sales outside of the marketing area
- Provide section for each order in which products are delivered
- Does not include deliveries to a plant
- Includes disposition from a plant store, vendor, or vending machine

Weight Per Gallon (WPG) Factors

- Standard WPG Factors
 - Whole 8.6
 - Reduced Fat 8.62
 - Lowfat (testing over 1.0%) = 8.62
 - Lowfat (testing under 1.0%) = 8.63
 - Nonfat 8.63
 - Flavored: to be determined by batch records
 - Standard Chocolate (Dry Sugar) = 8.20
 - Standard Chocolate (Liquid Sugar) = 7.80

Agricultural Marketing Service

WPG Factors

(COMPUTED AT 50 DEGREES F.)

<u>Range of Butterfat Tests</u>	<u>W E I G H T P E R U N I T I N P O U N D S</u>						
	<u>gallon</u>	<u>half- gallon</u>	<u>quart</u>	<u>pint</u>	<u>third- quart</u>	<u>10-oz.</u>	<u>half- pint</u>
0- 0.99	8.63	4.315	2.1575	1.07875	.71917	.67422	.539375
1.00- 2.99	8.62	4.310	2.1550	1.07750	.71833	.67344	.538750
3.00- 4.99	8.60	4.300	2.1500	1.07500	.71667	.67188	.537500
5.00- 8.99	8.58	4.290	2.1450	1.07250	.71500	.67031	.536250
9.00-13.99	8.55	4.275	2.1375	1.06875	.71250	.66797	.534375
14.00-18.99	8.51	4.255	2.1275	1.06375	.70917	.66484	.531875
19.00-22.99	8.48	4.240	2.1200	1.06000	.70667	.66250	.530000
23.00-26.99	8.45	4.225	2.1125	1.05625	.70417	.66016	.528125
27.00-28.99	8.43	4.215	2.1075	1.05375	.70250	.65859	.526875
29.00-30.99	8.41	4.205	2.1025	1.05125	.70083	.65703	.525625
31.00-32.99	8.40	4.200	2.1000	1.05000	.70000	.65625	.525000
33.00-34.99	8.39	4.195	2.0975	1.04875	.69917	.65547	.524375
35.00-36.99	8.37	4.185	2.0925	1.04625	.69750	.65391	.523125
37.00-38.99	8.36	4.180	2.0900	1.04500	.69667	.65313	.522500
39.00-40.99	8.35	4.175	2.0875	1.04375	.69583	.65234	.521875
41.00-42.99	8.33	4.165	2.0825	1.04125	.69417	.65078	.520625
43.00-44.99	8.32	4.160	2.0800	1.04000	.69333	.65000	.520000
45.00-46.99	8.30	4.150	2.0750	1.03750	.69167	.64844	.518750
47.00-48.99	8.29	4.145	2.0725	1.03625	.69083	.64766	.518125
49.00-50.99	8.28	4.140	2.0700	1.03500	.69000	.64688	.517500

Route Disposition

Plant :
Pool Date : January 2018
Order : 051
YRMO : 201801

Area Sales

Total In	0	0
Total Out	0	0
Totals	0	0

To Order No.	Product Code	Product Pounds	Butterfat Pounds

Route Disposition

Plant :
Pool Date : January 2018
Order : 051
YRMO : 201801

Area Sales

		<i>Total In</i>	<i>100,000</i>	<i>30,000</i>
		<i>Total Out</i>	<i>0</i>	<i>0</i>
		<i>Totals</i>	<i>100,000</i>	<i>30,000</i>
To Order No.	Product Code	Product Pounds	Butterfat Pounds	
51	Whole Milk	100,000	30,000.00	

Module 3: Basics of Reporting

Other Uses and Animal Feed

Other Uses: Dump Milk

- Can include bulk or packaged products
- Can include “used to produce” (UTP) products, but must not be double-accounted for in both UTP and dumps
- Product must be measureable and testable
- Product must be returned to, and/or assembled at, a reporting handler’s plant facility to create a complete accounting of product receipts and utilization
- Prior approval is not mandatory, but the next business day is required
- Line rinse is not typically allowed, however, uncontaminated line rinse may qualify if it meets Market Administrators’ (MA) requirements for measurement and testing
- Dumps that have been requested, and approved by MA, must be shown as utilization on MA Report at lowest priced class

Other Uses: Accidental Loss

- Product was lost and is, therefore, not measurable, but documentation is still provided by the reporting handler
- Notice of the loss must be received by the next business day after the event has occurred
- Anything within the handler's control is not an accidental loss
- Should not include employee error
- Should be limited to “acts of nature” and extraordinary situations or circumstances

Agricultural Marketing Service

REPORT OF MILK PRODUCTS DUMPED OR LOST

*Instructions: To qualify for appropriate credit for dumped or lost product, notification must be made to the Market Administrator's office by telephone, fax, or email by the next business day. **Please report dump or loss to one of the phone numbers, fax numbers or email addresses listed above.***

HANDLER NAME _____ LOCATION _____
(CITY/STATE)

DATE OF DUMP/LOSS _____ TIME _____ Where and how was product disposed?

(Please check description, explain if necessary)

Product dumped from batch tank, vat, silo or other measurable method.
 Explain: _____

Product loss was not contained (accidental loss, quantity estimated through other methods).
 Explain: _____

Product Description	Units of Measure	Product Weight	Butterfat %	SNF %

Handler Comments:

Handler Representative:

Name _____ Date _____

MA Representative Receiving Notification

Name _____ Date _____

Comments: _____

MA Use Only	
Month	
Auditor	
Date	

According to the Paperwork Reduction Act of 1995, an agency may not conduct or sponsor, and a person is not required to respond to a collection of information unless it displays a valid OMB control number. The valid OMB control number for this information collection is 0541-0043. The time required to complete this information collection is estimated to average 5 hours per response, including the time for reviewing instructions, searching existing data sources, gathering and reviewing the data needed, and completing and reviewing the collection of information.

The U.S. Department of Agriculture (USDA) prohibits discrimination in all its programs and services on the basis of race, color, national origin, sex, disability, and where applicable, age, marital status, familial status, parental status, religion, sexual orientation, genetic information, political belief, reprisal, or because all or part of an individual's income is derived from any public assistance program (Not all prohibited bases apply to all programs). Persons with disabilities who require alternative means for communication of program information (Braille, large print, audiotape, etc.) should contact USDA's TARGET Center at (202) 720-1600 (voice and TDD). To file a complaint of discrimination, write to USDA, Director, Office of Civil Rights, 1400 Independence Avenue, S.W., Washington, D.C. 20250-9410, or call (800) 795-3271 (voice) or (202) 720-6181 (TDD). USDA is an equal opportunity provider and employer.

Animal Feed

- Can include bulk or packaged product
- Can include “used to produce” (UTP) products, but must not be double-accounted for in both UTP and animal feed
- Products must be measureable and testable
- Products must be returned to, and/or assembled at, a reporting handler’s plant facility to create a complete accounting of product receipts and utilization
- There must be a signed form from farmer and access to farm location
- Reporting will be similar to dumped milk in terms of inclusion on the market report

Module 3: Basics of Reporting

Producer Daily Weights & Payroll

Producer Daily Weights

- Producer weights only apply to Fully Regulated Handlers
- Submit these reports with the monthly Market Report
- Details of the report include:
 - Dates – pick up and delivery
 - Coop or Broker name
 - Load information – producer number, manifest
 - Which Federal Order the load will be Pooled
 - Settled weight and components

Agricultural Marketing Service

Producer Daily Weights

Handler _____
Location _____
Mailing Address _____

Pool Month _____

	Scale	BFLbs	ProtLbs	SNFLbs	OSLbs
Totals:	139,774	5,151.71	4,482.52	12,856.05	8,173.53

Pick Up Date	Del Date	Co-op / Broker	Buyer	Mfst	MMA Prod #	State Prod #	Tk	Prod St/Cty	MMA Ord Pooled	Scale	BFLbs	ProtLbs	SNFLbs	OSLbs	BF	Prot	Lact	SNF	OS
04/14	04/17		PLANT A	111111	12345	12345	1	48001	N	42,774	1,496.21	1,349.90	4,223.45	2,673.55	4.11	3.14	4.64	8.87	5.73
04/27	04/28		PLANT B	333333	34567	34567	1	48001	51	48,700	1,665.54	1,514.57	4,285.60	2,771.03	3.42	3.11	4.65	8.80	5.69
04/27	04/28		PLANT C	555555	56789	56789	1	48001	126	48,300	1,989.96	1,618.05	4,347.00	2,728.95	4.12	3.35	4.59	9.00	5.65

Producer Payroll Report

Required by all handlers that submitted daily weights

- Producer payment information
- PPD and component information
- Any premiums and authorized deductions

Agricultural Marketing Service

Producer Payroll Report

Handler _____
 Plant Location _____
 Mailing Address _____

Payment Rates _____
 Per cwt Per Lb. Per Lb. Per Lb. Per cwt

Date _____

PRODUCER NAME & NUMBER	Milk Pounds	B.F. Test	Butterfat Pounds	Protein Test	Protein Pounds	O.S. Test	O.S. Pounds	COMPONENTS AND GROSS VALUE						DEDUCTIONS					Net Amt. Paid Producer				
								P.P.D. Value	B.F. Value	Protein Value	O.S. Value	Premium Amount	GROSS VALUE	Marketing Fee	Hauling Amount	Assignments	N.D.P.R.B	CA Quota Deduction		Advance Amount			
Total	X.XXXX		X.XXXX		X.XXXX		X.XXXX																

NAME OF HANDLER _____

(PERSON AUTHORIZED TO SIGN FOR HANDLER) _____

DATE _____

(TITLE) _____

Module 3: Basics of Reporting

Reporting Logistics

Reports of Receipts and Utilization

Market Report

- Each handler shall report monthly so that the Market Administrator's office receives the report **on or before the 9th day** after the end of the month

For more information see §1051.30.

Reports of Receipts and Utilization

- **Full Market Report**
 - Fully Regulated Plants
 - Partially Regulated Plants
 - Nonpool Plants

- **Producer Daily Weights**
 - Fully Regulated Handlers

- **Producer Handler Market Report**

- **Exempt Plant Market Report**

Important Dates: Reporting

FEDERAL ORDER 51 REPORTING AND ANNOUNCEMENT DATES	POOL MONTH											
	Jan-18	Feb-18	Mar-18	Apr-18	May-18	Jun-18	Jul-18	Aug-18	Sep-18	Oct-18	Nov-18	Dec-18
HANDLER REPORT OF RECEIPTS AND UTILIZATIONS 1/											9-Dec Sun	9-Jan Wed
PRODUCER PRICES ANNOUNCED											14-Dec Fri	14-Jan Mon
PRODUCER PAYROLL REPORTS TO MA OFFICE 1/											20-Dec Thu	20-Jan Sun

- All reports of information are due on or before date identified
- Report of Receipts and Utilization (Market Report) due on or before 9th
- Statistical Uniform Price announced on or before 14th
- Payroll Report due on or before 20th

Price Announcement

On or before the 14th day after the end of the month, the Market Administrator shall announce publicly the following prices:

- Producer Price Differential (PPD)
- protein price
- nonfat solids price
- other solids price
- butterfat price
- average butterfat, nonfat solids, protein, and other solids content of producer milk
- Statistical uniform price for milk containing 3.5 percent butterfat
 - Computed using the Class III price and the producer price differential

Agricultural Marketing Service

Sample Statistical Uniform Price



United States
Department of Agriculture
Agricultural Marketing Service
Dairy Program

CALIFORNIA MARKETING AREA FEDERAL MILK ORDER NO. 51

Tel: (530) 662-2037 — Fax: (844) 206-7024
email: market.admin@cafmmo.com
website: www.cafmmo.com

Mailing Address:
221 W Court St, Ste 3B
Woodland, CA 95695-2983

EXAMPLE STATISTICAL UNIFORM PRICE ANNOUNCEMENT

Producer Milk	Percent	Pounds	Minimum Class Price
Class I	15.0	150,000,000	\$18.37
Class II	10.0	100,000,000	\$16.77
Class III	45.0	450,000,000	\$16.24
Class IV	30.0	300,000,000	\$16.05
Total Producer Milk	100.0	1,000,000,000	

Computation of Uniform Price (per cwt @ Los Angeles County, CA)		Component Prices	
Producer Price Differential	\$0.60	Butterfat Price	\$2.6000 /lb
Class III Price (@ 3.5% Butterfat)	\$16.24	Protein Price	2.1000 /lb
Statistical Uniform Price (@ 3.5% Butterfat)	\$16.84	Other Solids Price	0.1500 /lb
Statistical Uniform Price (@ Average Pool Component Tests)	\$18.05	Nonfat Solids Price	0.8000 /lb

COMPUTATION OF PRODUCER PRICE DIFFERENTIAL				
	Product Pounds	Price per cwt/lb.	Component Value	Total Value
Class I— Skim	146,700,000	\$9.50	13,836,500.00	
Butterfat	3,300,000	2.6300	8,679,000.00	
Less: Location Adjustment to Handlers			(375,000.00)	\$22,240,500.00
Class II— Butterfat	5,000,000	2.6070	13,035,000.00	
Nonfat Solids	8,700,000	0.8800	7,656,000.00	20,691,000.00
Class III— Butterfat	16,515,000	2.6000	42,939,000.00	
Protein	14,850,000	2.1000	31,185,000.00	
Other Solids	25,650,000	0.1500	3,847,500.00	77,971,500.00
Class IV— Butterfat	13,500,000	2.6000	35,100,000.00	
Nonfat Solids	26,100,000	0.8000	20,880,000.00	55,980,000.00
Total Classified Value				\$176,883,000.00
Add: Overage—All Classes			10,000.00	
Inventory Reclassification—All Classes			50,000.00	
Other Source Receipts	50,000 Pounds		2,000.00	
Total Pool Value				\$176,945,000.00
Less: Value of Producer Butterfat	38,315,000	2.6000	(99,619,000.00)	
Value of Producer Protein	31,575,000	2.1000	(66,307,500.00)	
Value of Producer Other Solids	57,375,000	0.1500	(8,606,250.00)	
Total PPD Value Before Adjustments				\$2,412,250.00
Add: Location Adjustment to Producers			3,500,000.00	
One-half Unobligated Balance—Producer Settlement Fund			500,000.00	
Less: Producer Settlement Fund—Reserve			(412,250.00)	
Total Pool Milk & PPD Value	1,000,050,000 Producer pounds			\$6,000,000.00
Producer Price Differential		\$0.60		
Statistical Uniform Price		\$16.84		

(Selected pool and price statistics on next page)

Cary Hunter, Acting Market Administrator

CALIFORNIA MARKETING AREA FEDERAL MILK ORDER NO. 51

Statistical Uniform Price Announcement

Page 2

Payment Schedule

Payment Dates for the Month of:

EXAMPLE

Payments TO the Producer Settlement Fund due on:	Month 16, 2018
Payments FROM the Producer Settlement Fund made on:	Month 18, 2018
Final payments TO a Cooperative Association must be made on:	Month 18, 2018
Final payments to Producers must be RECEIVED by:	Month 19, 2018

Producer Price Differential and Statistical Uniform Price, by Zone Differential

	Zone Differential ^{1/}	Adjustment	Producer Price Differential	Statistical Uniform Price ^{2/}
dollars per hundredweight				
As Announced:	\$2.10	\$0.00	0.60	16.84
Other Zones:	\$2.00	(\$0.10)	0.50	16.74
	\$1.80	(\$0.30)	0.30	16.54
	\$1.70	(\$0.40)	0.20	16.44
	\$1.60	(\$0.50)	0.10	16.34

^{1/} Differentials listed apply to zones included in the California Marketing Area. Outside of this area, differentials may be above or below this range. Differentials apply on a county basis.

^{2/} Prices at 3.5 percent butterfat, 2.99 percent protein, and 5.69 percent other solids.

Producer Milk Received by Component Pounds

Producer Milk Receipts	Skim	Butterfat	Protein pounds	Other Solids	Nonfat Solids
Class I	146,700,000	3,300,000	4,725,000	8,925,000	13,650,000
Class II	95,000,000	5,000,000	3,000,000	5,700,000	8,700,000
Class III	433,485,000	16,515,000	14,850,000	25,650,000	40,500,000
Class IV	286,500,000	13,500,000	9,000,000	17,100,000	26,100,000
Total Producer Milk	961,685,000	38,315,000	31,575,000	57,375,000	88,950,000

Selected Pool Statistics

Average test of producer receipts:	Butterfat	3.83 %
	True Protein	3.16 %
	Other Solids	5.74 %

Administrative Assessment and Marketing Service Deduction

\$ 1000.85 - Assessment for order administration	\$0.08	per hundredweight
\$ 1000.86 - Deduction for marketing services	\$0.05	per hundredweight

Email & Website

Submit all reports to:

pool@cafmmo.com

Templates of forms available on website:

www.cafmmo.com/handler/reporting/forms/